



NICOLE

Network for Industrially Co-ordinated Sustainable Land Management in Europe

REMTECH EXPO DIGITAL
SEPTEMBER 2020



A quick guide to Land Stewardship at Industrial Sites

Hans Slenders (NICOLE/Arcadis), Lida Schelwald, Claudio Albano, Phil Crowcroft, Margot De Cleen (NL Government), Co Molenaar (NL Government), Robert Spencer, Bianca Nijhof, Roger Jacquet, Nicholas Tymko, Laurent Bakker, Horst Herzog, Pascal Mallien, Jordi Boronat, Paul van Riet, Olivier Maurer, Johan de Fraye, Paul Sheehan, Euan Hall



Who is NICOLE?

Land Stewardship

Exploring together with Common Forum

Key elements

NICOLE's Way forward, a quick guide

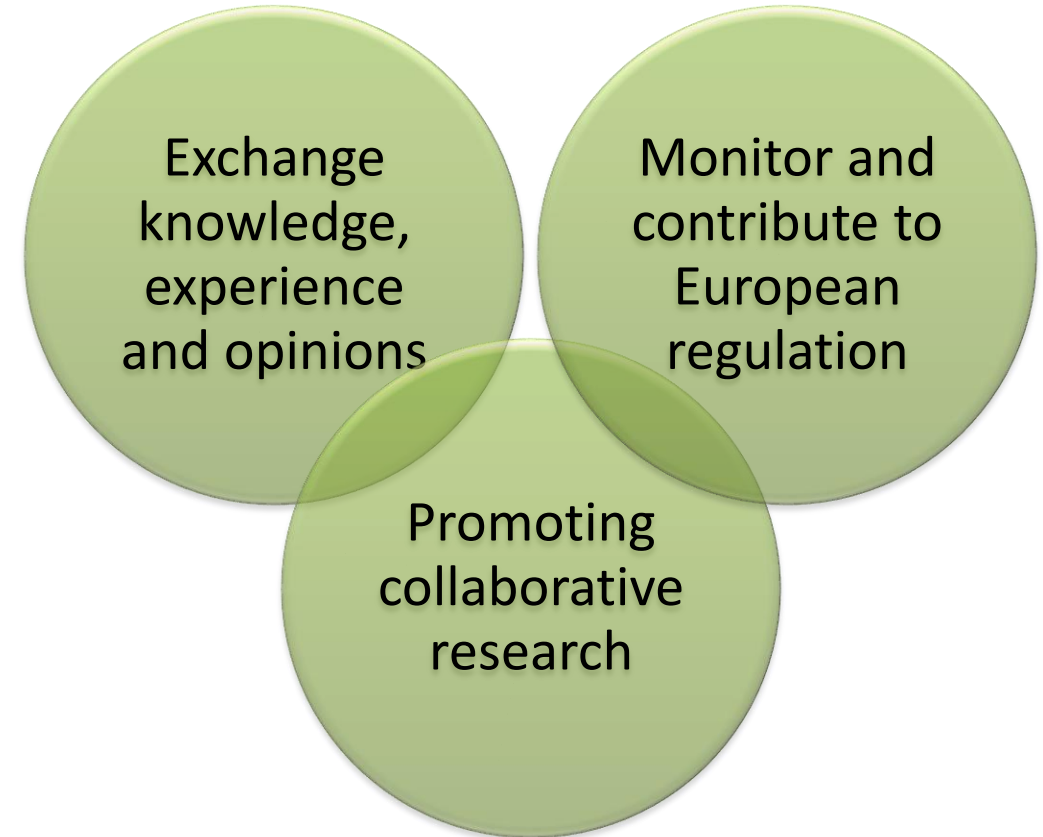
"Land Stewardship is of all times: As long as there have been people, they knew they had to care for their land in order to survive"



The Onundaga Lake Cleanup
Source: Honeywell

Network for Industrially Coordinated Sustainable Land Management in Europe

- A unique European Network of Soil Professionals from Industry, consultancy, academics and contractors in a cooperative, informal setting
- A leading organisation for the development and promotion of state-of-the-art solutions for sustainable Land Management





NICOLE definition of Land Stewardship

“Land Stewardship (LS) is the collective recognition of the natural, social and economic capital that land possesses or may possess, and the possibilities that this recognition offers for unlocking that value”

NICOLE 2020, www.nicole.org

“Both public and private land owners strongly influence the quality, use and value of land, our planet is a common responsibility”



Lady of the North
Courtesy of The Land Trust, UK
www.northumberlandia.com



2018: Exploring LS with Common Forum

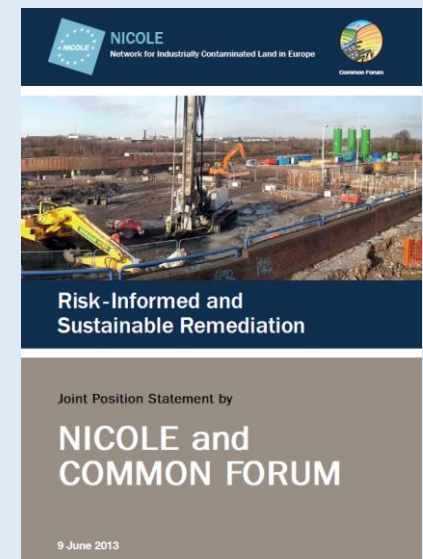
- NICOLE:
Sustainable Land management -> LS
 - Remediation
 - Redevelopment of Brownfields
 - (Temporary) use for nature or society
- Common Forum WG “Soil as a resource”
 - Circular and sustainable use
 - Land mostly privately owned; Public Private cooperation



A joint effort in a booklet that shows the benefits of the Land Stewardship concept

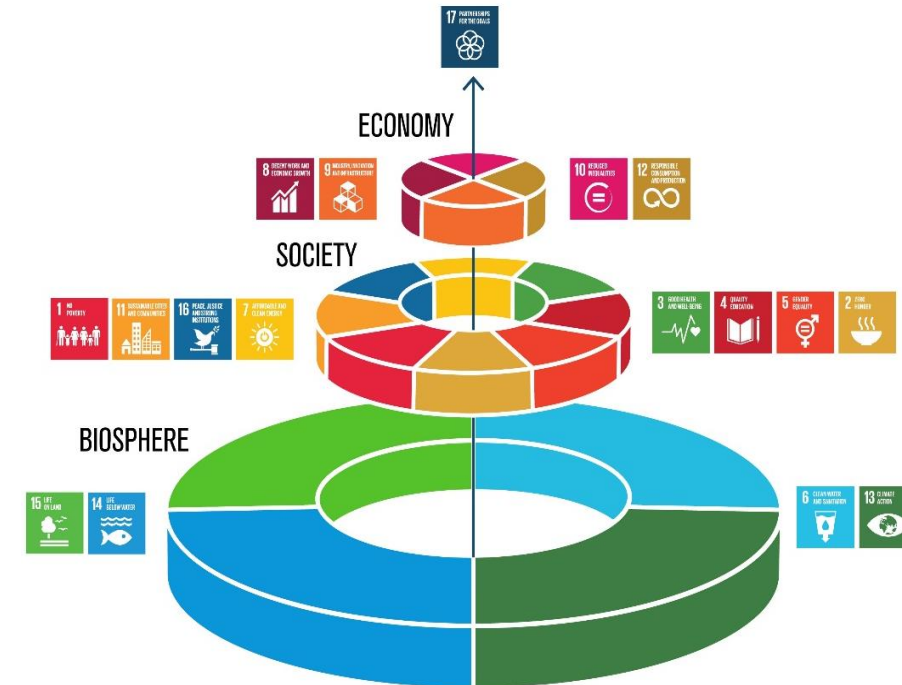


Joint Booklet NICOLE- Common Forum



Land Stewardship is about visualizing value and interdependency

- LS is about natural capital and social and economic value, and the benefits that land brings to human wellbeing and welfare.
- LS offers tools for optimizing Land management by effectively visualizing:
 - The added overall value of investments to Land Owners
 - The value of industrial use to society
 - The interaction between benefits, use and natural value
- There are many tools for visualizing land stewardship; in the second part of our guide we mention various categories of tools and examples



*Weddingcake SDGs
Source: Stockholm resilience centre*



Scope and scale of Land Stewardship

Land Stewardship can have different focus points and aims in different settings.


- **Diffusely degraded land at a regional scale and urban areas:** LS can help revitalize and increase the value and benefits (Soil+Land Stewardship);
- **Brownfields:** LS is a perfect tool for creating support for (nature, recreational etc.) redevelopment by visualizing the potential of unlocking values
- **Active industrial sites:** LS can underpin the broad value of the use and help improve that value and community relationship

“Land stewardship is key in the transition towards a Circular Economy”

- Options appraisal Sustainable Remediation
- Checklist to understand options and opportunities
- Stepwise approach (SR approach)
 - Engage stakeholders
 - Agree options and indicators
 - LS: agree on valuation tools
 - Evaluating and recordkeeping
 - Communication
- Not a single pathway, the route may differ in different settings

*But LS differs in the fact that it is applicable along the full lifecycle;
long-term horizon*

*“Land stewardship is a more mature way
of looking at sustainability”*


The header of the document features the NICOLE logo on the left and the Common Forum logo on the right. The NICOLE logo is a blue square with a white border, containing a circle of twelve white stars and the word "NICOLE" in white capital letters. The Common Forum logo is a circular emblem with a colorful, abstract design and the text "Common Forum" below it.

NICOLE
Network for Industrially Contaminated Land in Europe

Risk-Informed and Sustainable Remediation

Joint Position Statement by
**NICOLE and
COMMON FORUM**

9 June 2013

A photograph of a large-scale industrial remediation site. In the foreground, a yellow excavator is working on a concrete structure. In the background, several tall green storage tanks are visible against a clear sky. The site is surrounded by a fence and has various pieces of construction equipment scattered throughout.



Stakeholder involvement

- Beyond the Fences
- Identifying key stakeholders and roles
- Opportunities and values for society
- Dialogue, collaboration and proactive stakeholder engagement
- Commitment for choices facing societal challenges
- Awareness and common sense



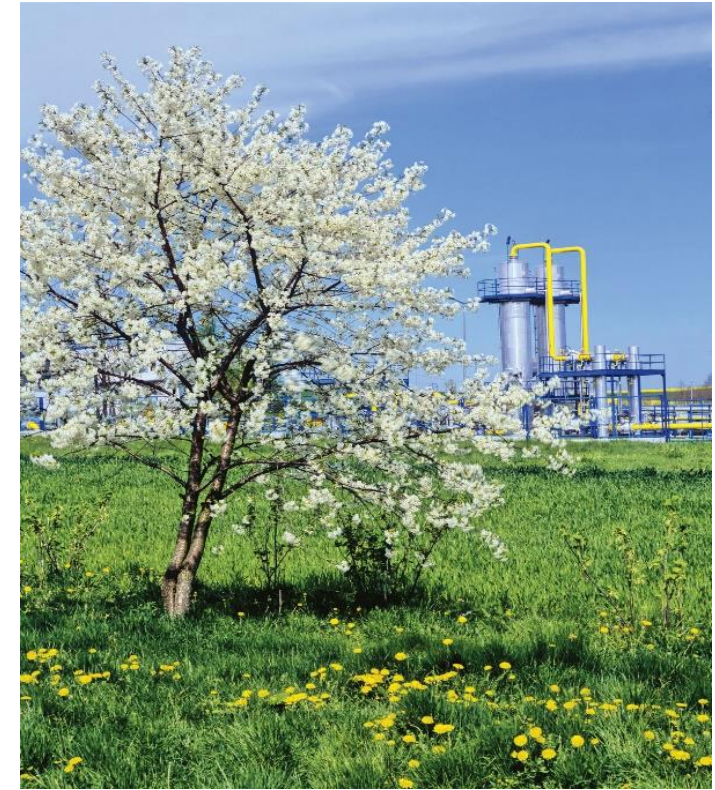
TERRA-project Belgium
Courtesy of:
Bekaert, Arcadis and ERM



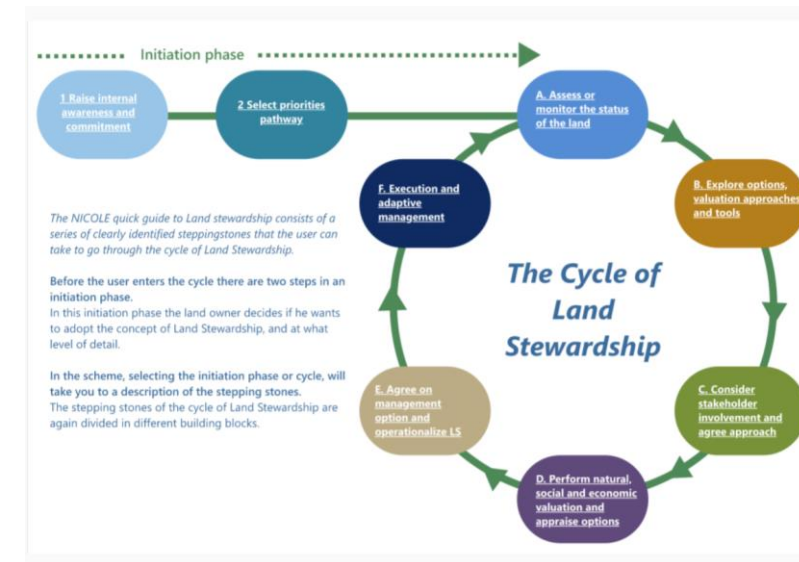
“Xarxa de Custòdia del Territori” *A network for land stewardship in Catalonia*

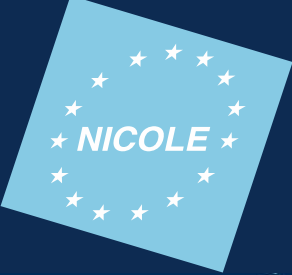
Adopting the concept of Land Stewardship also offers great means for:

- Revealing the hidden values of the site (social importance, cohesion and welfare, temporary nature, etc.)
- Finding the balance between impacts of industrial activity and the overall value and benefits with the community
- Decision making on optimizing the use and value of land, in times of operation, redevelopment or for remediation
- Strengthening the relationship with the neighbourhood community and other stakeholder through communication on the broader values of the site



- Written by the volunteers of the working group!
- Should be applicable in multiple legislative and cultural settings (High level guidance, the details are in the references)
- Mainly a stepwise approach (stepping stones and building blocks)
- Guide has two parts: 1. Introduction LS and 2. Stepping stones
- Stepping stones again have 2 parts: initiation and the cycle of LS
- Illustrated with cases





NICOLE

Network for Industrially Co-ordinated Sustainable Land Management in Europe

REMTECH EXPO DIGITAL
SEPTEMBER 2020



Questions?

Hans.slenders@arcadis.com

Lida@schelwald.nl

Nan.su@nicole.org